

Church House

Refurbishment Project

ScottWhitbyStudio

Sustainability Statement

March 2024

Contents

01. Introduction
02. Total Carbon Sequestration
03. ReCork Cork Flooring
04. CorkSol Spraycork
05. Graphenstone Paint
06. Natural & Recycled Materials
07. Lighting
08. Appendix

The Corporation of the Church House have set an ambitious target to be Carbon Neutral by 2030. As such, sustainability is a key driver of this refurbishment project and the Corporation is committed to ensuring that wherever possible, the most sustainable choices are made.

It is the ambition of the entire project team to achieve a carbon negative or neutral refurbishment of the Grade II Listed building. In order to achieve this, each decision relating to the project has been carefully considered, from the specification of materials (utilising sustainable and natural materials such as cork), to ensuring the ethical recycling and re-use of any materials removed from the building.



Office space during refurbishment

The refurbishment project at Church House has Sequestered up to **1,260t CO₂e** through material specification

** All calculations based on manufacturers data and specifications*



Walls sprayed in Cork

This equates to
60%
of the CO₂ emissions
of Church House
Westminster,
Lambeth Palace &
Bishopthorpe Palace
in 2021

** All calculations based on manufacturers data and specifications*



Walls sprayed in Cork

Or equal to
1,067
return flights from
London to New York



Walls sprayed in Cork

** All calculations based on manufacturers data and specifications*

Over 6,000sqm
of Cork Flooring
has been installed,
Sequestering over
1,000t CO₂e

** All calculations based on manufacturers data and specifications*



S4 completed ReCork floor finish

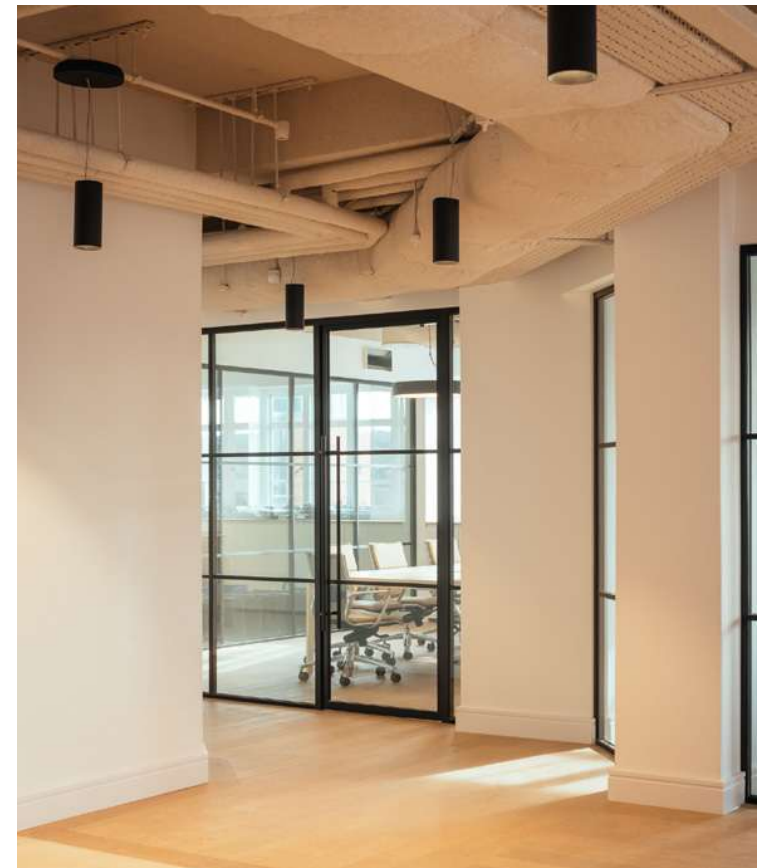
Over 1,100kg
of Granulated Cork
has been used in
SprayCork applied
across the building,
sequestering over
80t CO₂e



S4 completed SprayCork finish on soffit

* All calculations based on manufacturers data and specifications

The use of
Graphenstone Paint
has created a CO₂e
saving of
6.96t
vs an industry
standard alternative



S4 completed office space.

* All calculations based on manufacturers data and specifications

Reception feature walls are made from **100% Recycled and Recyclable Plastic**

Natural Clay Plasters have **Low Embodied Carbon**, are non-toxic, inert and low VOC emissions

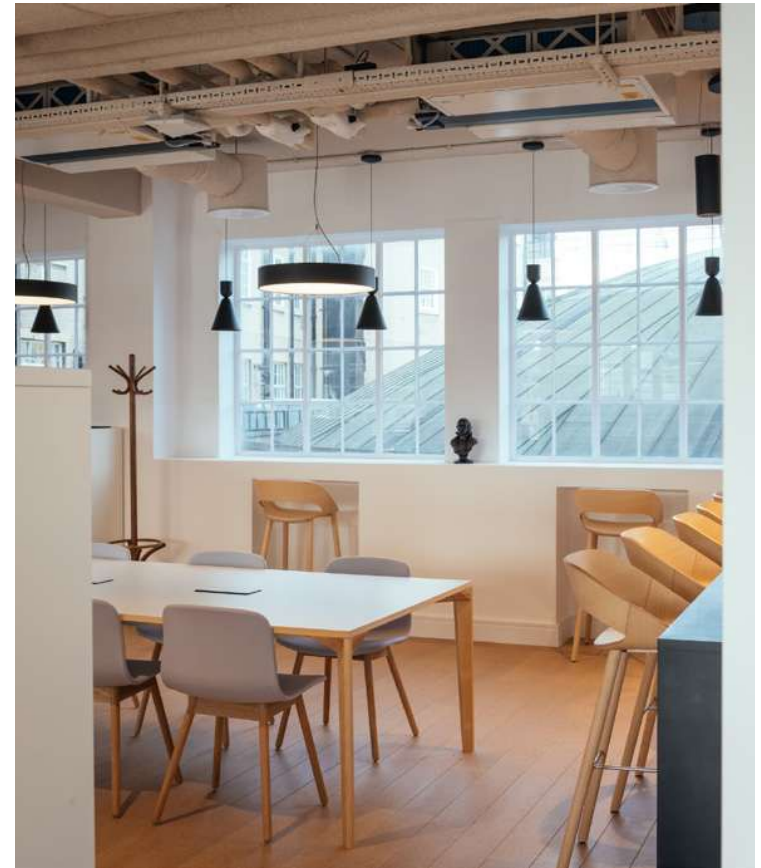
* All calculations based on manufacturers data and specifications



Smile Plastics - Grey Mist (used for North Door Entrance feature wall)

New LED lighting increases efficiency and the products are **93% Recyclable & Manufactured with 100% Green Energy**

** All calculations based on manufacturers data and specifications*



S4 completed office space.